



Bridge Place, SW1V 1AF
£3,450 Per Month

coopers
OF LONDON EST. 1986

Bridge Place, SW1V

- Available Early March
- Spacious double bedrooms
- Close to transport links
- Private Balcony
- Modern, high spec finish
- Allocated parking via separate negotiation

Coopers are excited to present this spacious two bedroom flat in the heart of London Victoria, Westminster.

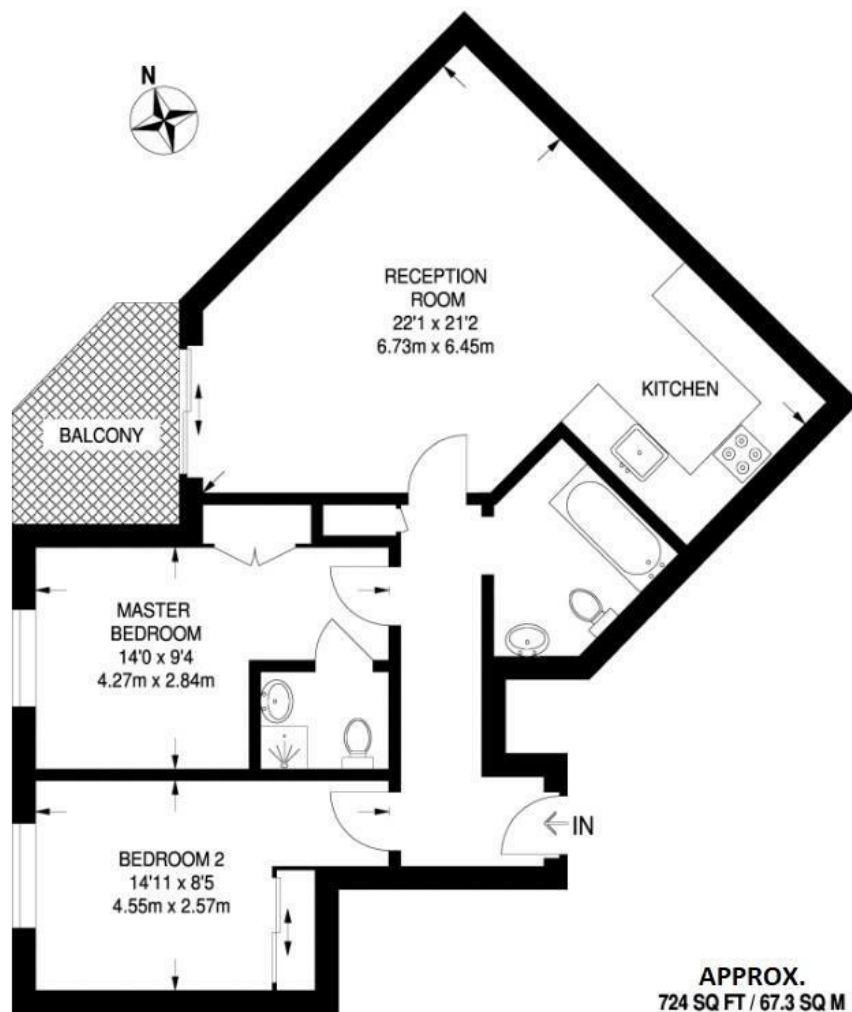
This high specification apartment comprises two double bedrooms, an open-plan kitchen living room and two bathrooms with marble tiling. The apartment further benefits from secure parking and a day concierge service. The apartment sits in a development located approximately 0.1 miles from London Victoria Station (Victoria line, Circle line, District line, Network Rail, Coach).

This prime location is close to the distinguished areas of Belgravia and Mayfair which embrace various eateries and boutiques, and also to the green spaces of St. James's Park, Hyde Park and Green Park.

Allocated parking available via separate negotiation.







Energy Efficiency Rating		
	Current	Potential
Very energy efficient - lower running costs		
(92 plus) A		
(81-91) B		
(69-80) C		
(55-68) D		
(39-54) E		
(21-38) F		
(1-20) G		
Not energy efficient - higher running costs		
England & Wales	EU Directive 2002/91/EC	

Environmental Impact (CO ₂) Rating		
	Current	Potential
Very environmentally friendly - lower CO ₂ emissions		
(92 plus) A		
(81-91) B		
(69-80) C		
(55-68) D		
(39-54) E		
(21-38) F		
(1-20) G		
Not environmentally friendly - higher CO ₂ emissions		
England & Wales	EU Directive 2002/91/EC	

Viewing

Strictly by appointment with:
Coopers of London , 22 Cleveland Street,
Fitzrovia, London W1T 4JB
info@coopersonlondon.co.uk

0207 580 9658

These particulars, whilst believed to be accurate are set out as a general outline only for guidance and do not constitute any part of an offer or contract. Intending purchasers should not rely on them as statements or representation of fact, but must satisfy themselves by inspection or otherwise as to their accuracy. No person in this firms employment has the authority to make or give any representation or warranty in respect of the property.